

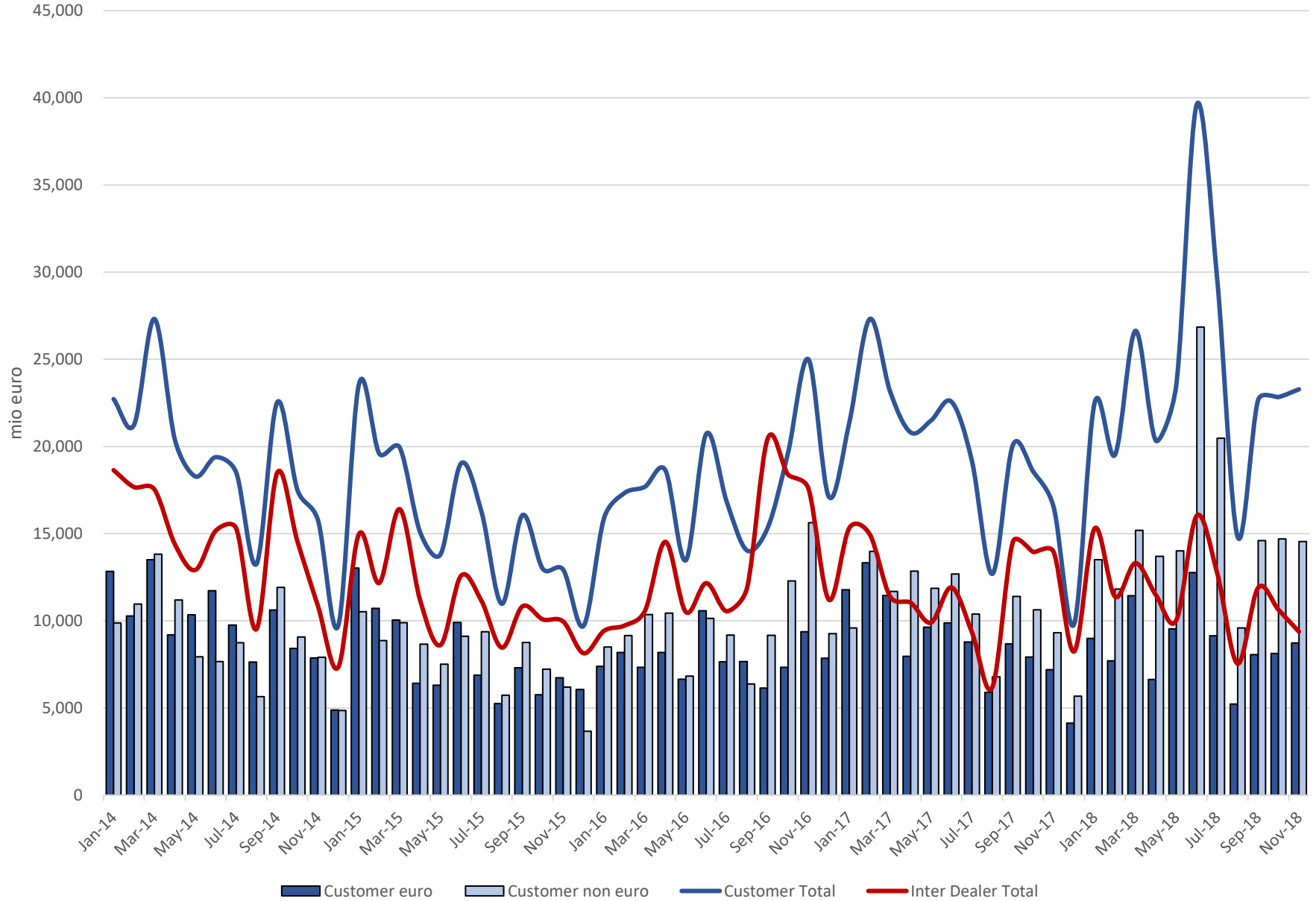
OLO Turnover - PD and RD

Turnover in million euro

All turnover is single counted

	Customer euro	Customer non euro	Customer Total	Inter Dealer euro	Inter Dealer non euro	Inter Dealer Total	Grand total
Nov-18	8,734	14,544	23,278	5,618	3,760	9,378	32,656
Oct-18	8,133	14,703	22,836	5,461	5,176	10,637	33,473
Sep-18	8,059	14,602	22,661	4,986	6,907	11,893	34,554
Aug-18	5,228	9,587	14,816	3,152	4,388	7,540	22,356
Jul-18	9,136	20,469	29,605	6,107	6,633	12,740	42,345
Jun-18	12,772	26,847	39,619	7,246	8,784	16,030	55,649
May-18	9,541	14,009	23,549	5,007	5,022	10,030	33,579
Apr-18	6,636	13,699	20,334	4,743	6,739	11,482	31,816
Mar-18	11,440	15,194	26,633	6,115	7,196	13,311	39,944
Feb-18	7,698	11,825	19,522	5,725	5,660	11,385	30,907
Jan-18	8,992	13,502	22,494	6,871	8,423	15,295	37,788
Dec-17	4,137	5,680	9,818	3,314	4,926	8,240	18,058
Nov-17	7,198	9,319	16,516	5,808	8,131	13,939	30,455
Oct-17	7,926	10,633	18,559	6,726	7,222	13,948	32,506
Sep-17	8,673	11,401	20,074	6,487	8,031	14,519	34,592
Aug-17	5,903	6,792	12,695	3,068	3,128	6,196	18,891
Jul-17	8,783	10,385	19,168	3,698	5,647	9,345	28,513
Jun-17	9,877	12,689	22,566	4,860	7,057	11,917	34,483
May-17	9,627	11,866	21,493	3,885	6,013	9,899	31,392
Apr-17	7,959	12,851	20,810	4,404	6,639	11,042	31,852
Mar-17	11,453	11,684	23,137	4,749	6,634	11,383	34,520
Feb-17	13,325	13,989	27,313	6,466	8,494	14,960	42,274
Jan-17	11,786	9,592	21,377	6,331	8,997	15,328	36,706
Dec-16	7,852	9,262	17,114	4,208	7,002	11,210	28,323
Nov-16	9,373	15,627	25,000	7,066	10,520	17,586	42,586
Oct-16	7,336	12,295	19,631	7,132	11,258	18,390	38,021
Sep-16	6,145	9,173	15,318	7,789	12,646	20,435	35,753
Aug-16	7,658	6,375	14,033	4,958	6,944	11,902	25,935
Jul-16	7,656	9,180	16,836	4,368	6,179	10,547	27,383
Jun-16	10,583	10,142	20,725	5,126	7,036	12,162	32,887
May-16	6,651	6,823	13,474	4,401	6,103	10,504	23,978
Apr-16	8,189	10,445	18,634	5,677	8,858	14,535	33,169
Mar-16	7,335	10,355	17,690	4,395	6,172	10,567	28,257
Feb-16	8,177	9,155	17,332	4,201	5,527	9,727	27,059
Jan-16	7,395	8,501	15,896	4,313	5,115	9,428	25,324
Dec-15	6,056	3,661	9,716	3,569	4,571	8,140	17,857
Nov-15	6,730	6,202	12,932	4,301	5,658	9,959	22,891
Oct-15	5,758	7,224	12,983	4,680	5,403	10,084	23,066
Sep-15	7,306	8,752	16,058	4,429	6,394	10,823	26,881
Aug-15	5,251	5,727	10,977	3,989	4,474	8,463	19,441
Jul-15	6,887	9,379	16,266	5,881	5,267	11,148	27,414
Jun-15	9,908	9,120	19,028	5,943	6,641	12,584	31,612
May-15	6,308	7,514	13,822	4,488	4,123	8,611	22,433
Apr-15	6,417	8,665	15,082	5,392	5,787	11,179	26,260
Mar-15	10,045	9,894	19,938	7,140	9,263	16,403	36,341
Feb-15	10,721	8,867	19,588	5,754	6,419	12,173	31,761
Jan-15	13,031	10,522	23,553	7,358	7,607	14,965	38,517
Dec-14	4,891	4,857	9,748	2,964	4,387	7,351	17,099
Nov-14	7,866	7,911	15,777	4,672	6,181	10,853	26,630
Oct-14	8,421	9,069	17,490	6,678	7,861	14,539	32,029
Sep-14	10,614	11,914	22,528	7,269	11,209	18,478	41,006
Aug-14	7,634	5,646	13,280	3,831	5,704	9,536	22,816
Jul-14	9,761	8,747	18,508	6,682	8,619	15,301	33,808
Jun-14	11,732	7,658	19,390	6,732	8,440	15,171	34,561
May-14	10,344	7,937	18,281	5,737	7,180	12,917	31,198
Apr-14	9,191	11,198	20,388	6,101	8,292	14,393	34,781
Mar-14	13,501	13,818	27,319	7,170	10,364	17,534	44,853
Feb-14	10,282	10,959	21,241	7,591	10,084	17,674	38,915
Jan-14	12,843	9,875	22,718	8,178	10,466	18,644	41,362

OLO - Customer Turnover



OLO - Inter Dealer Turnover

